



Report verification at igi.org

ELECTRONIC COPY

LABORATORY GROWN DIAMOND REPORT

August 25, 2025
IGI Report Number
Description LABORATORY GROWN DIAMOND
Shape and Cutting Style MODIFIED RECTANGULAR CUSHION STEP CUT
Measurements 10.62 X 7.77 X 4.64 MM

GRADING RESULTS

Carat Weight 3.18 CARATS
Color Grade D
Clarity Grade VVS 2

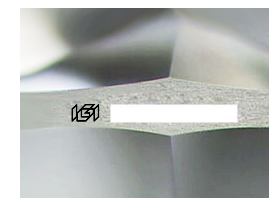
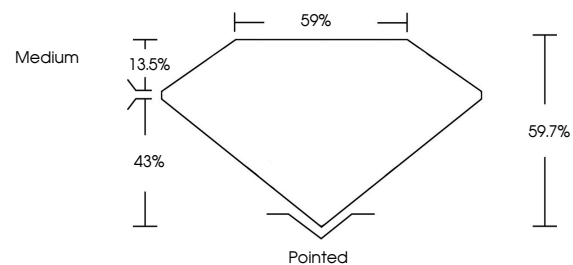
ADDITIONAL GRADING INFORMATION

Polish EXCELLENT
Symmetry EXCELLENT
Fluorescence NONE

Inscription(s) IGI

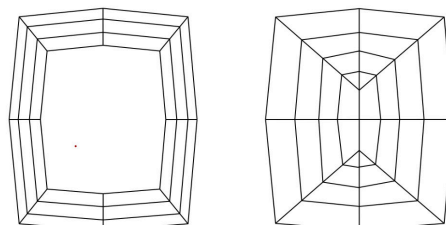
Comments: This Laboratory Grown Diamond was created by Chemical Vapor Deposition (CVD) growth process. Type IIa

PROPORTIONS



Sample Image Used

CLARITY CHARACTERISTICS



KEY TO SYMBOLS

Red symbols indicate internal characteristics.
Green symbols indicate external characteristics.

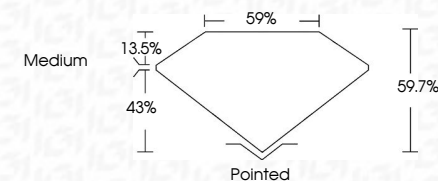
COLOR

D E F G H I J Faint Very Light Light

CLARITY

FL IF VVS 1-2 VS 1-2 SI 1-2 I 1-3
Flawless Internally Flawless Very Very Slightly Included Very Slightly Included Slightly Included Included

August 25, 2025
IGI Report Number
Description LABORATORY GROWN DIAMOND
Shape and Cutting Style MODIFIED RECTANGULAR CUSHION STEP CUT
Measurements 10.62 X 7.77 X 4.64 MM
GRADING RESULTS
Carat Weight 3.18 CARATS
Color Grade D
Clarity Grade VVS 2



ADDITIONAL GRADING INFORMATION

Polish EXCELLENT
Symmetry EXCELLENT
Fluorescence NONE
Inscription(s) IGI

Comments: This Laboratory Grown Diamond was created by Chemical Vapor Deposition (CVD) growth process. Type IIa



August 25, 2025
IGI Report No MODIFIED RECTANGULAR CUSHION STEP CUT
Carat Weight 3.18 CARATS
Color Grade D
Clarity Grade VVS 2
Depth 59.7%
Table 59%
Girdle Medium
Culet Pointed
Polish EXCELLENT
Symmetry EXCELLENT
Fluorescence NONE
Inscription(s) IGI

Comments: This Laboratory Grown Diamond was created by Chemical Vapor Deposition (CVD) growth process. Type IIa