



LABORATORY GROWN DIAMOND REPORT

January 28, 2026

IGI Report Number

Description

LABORATORY GROWN DIAMOND

Shape and Cutting Style

PEAR BRILLIANT

Measurements

5.50 X 3.99 X 2.51 MM

GRADING RESULTS

Carat Weight

0.32 CARAT

Color Grade

G

Clarity Grade

VS 1

ADDITIONAL GRADING INFORMATION

Polish

VERY GOOD

Symmetry

GOOD

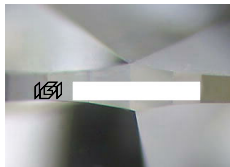
Fluorescence

NONE

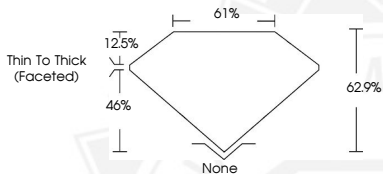
Inscription(s)



Comments: As Grown - No indication of post-growth treatment. This Laboratory Grown Diamond was created by High Pressure High Temperature (HPHT) growth process. Type II



Sample Image Used



January 28, 2026

IGI Report Number

PEAR BRILLIANT

LABORATORY GROWN DIAMOND

5.50 X 3.99 X 2.51 MM

Carat Weight

0.32 CARAT

Color Grade

G

Clarity Grade

VS 1

Polish

VERY GOOD

Symmetry

GOOD

Fluorescence

NONE

Comments: As Grown - No indication of post-growth treatment. This Laboratory Grown Diamond was created by High Pressure High Temperature (HPHT) growth process. Type II

January 28, 2026

IGI Report Number

PEAR BRILLIANT

LABORATORY GROWN DIAMOND

5.50 X 3.99 X 2.51 MM

Carat Weight

0.32 CARAT

Color Grade

G

Clarity Grade

VS 1

Polish

VERY GOOD

Symmetry

GOOD

Fluorescence

NONE

Comments: As Grown - No indication of post-growth treatment. This Laboratory Grown Diamond was created by High Pressure High Temperature (HPHT) growth process. Type II



THIS DOCUMENT WAS PRODUCED WITH THE FOLLOWING SECURITY MEASURES: SPECIAL DOCUMENT PAPER, INK SCREENS, WATERMARK, BACKGROUND DESIGNS, HOLOGRAM AND OTHER SECURITY FEATURES NOT LISTED AND DO EXCEED DOCUMENT SECURITY INDUSTRY GUIDELINES.