



ELECTRONIC COPY

Report verification at igi.org

LABORATORY GROWN DIAMOND REPORT

October 19, 2024
 IGI Report Number
 Description **LABORATORY GROWN DIAMOND**
 Shape and Cutting Style **PEAR BRILLIANT**
 Measurements **10.58 X 6.54 X 3.90 MM**

GRADING RESULTS

Carat Weight **1.52 CARAT**
 Color Grade **D**
 Clarity Grade **VVS 1**

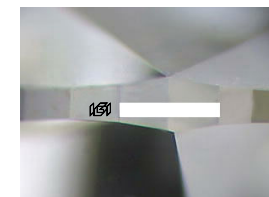
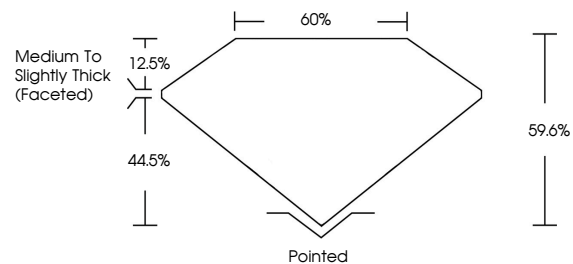
ADDITIONAL GRADING INFORMATION

Polish **EXCELLENT**
 Symmetry **EXCELLENT**
 Fluorescence **NONE**

Inscription(s)

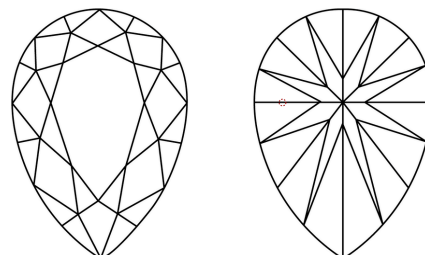
Comments: As Grown - No indication of post-growth treatment.
 This Laboratory Grown Diamond was created by High Pressure High Temperature (HPHT) growth process.
 Type II

PROPORTIONS



Sample Image Used

CLARITY CHARACTERISTICS



KEY TO SYMBOLS

Red symbols indicate internal characteristics.
 Green symbols indicate external characteristics.

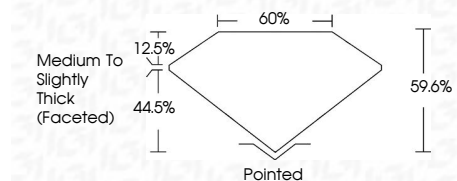
COLOR

| | | | | | | | | | |
|---|---|---|---|---|---|---|-------|------------|-------|
| D | E | F | G | H | I | J | Faint | Very Light | Light |
|---|---|---|---|---|---|---|-------|------------|-------|

CLARITY

| | | | | |
|---------------------|-----------------------------|------------------------|-------------------|------------------|
| IF | VVS ¹⁻² | VS ¹⁻² | SI ¹⁻² | I ¹⁻³ |
| Internally Flawless | Very Very Slightly Included | Very Slightly Included | Slightly Included | Included |

October 19, 2024
 IGI Report Number
 Description **LABORATORY GROWN DIAMOND**
 Shape and Cutting Style **PEAR BRILLIANT**
 Measurements **10.58 X 6.54 X 3.90 MM**
GRADING RESULTS
 Carat Weight **1.52 CARAT**
 Color Grade **D**
 Clarity Grade **VVS 1**



ADDITIONAL GRADING INFORMATION

Polish **EXCELLENT**
 Symmetry **EXCELLENT**
 Fluorescence **NONE**

Inscription(s)
 Comments: As Grown - No indication of post-growth treatment.
 This Laboratory Grown Diamond was created by High Pressure High Temperature (HPHT) growth process.
 Type II



| | | |
|------------------------------------|----------------|------------------------------------|
| October 19, 2024 | IGI Report No | PEAR BRILLIANT |
| 10.58 X 6.54 X 3.90 MM | Carat Weight | 1.52 CARAT |
| D | Color Grade | D |
| VVS 1 | Clarity Grade | VVS 1 |
| 60% | Table | 60% |
| Medium to Slightly Thick (Faceted) | Graile | Medium to Slightly Thick (Faceted) |
| Pointed | Culet | Pointed |
| EXCELLENT | Polish | EXCELLENT |
| EXCELLENT | Symmetry | EXCELLENT |
| NONE | Fluorescence | NONE |
| | Inscription(s) | |

Comments: As Grown - No indication of post-growth treatment.
 This Laboratory Grown Diamond was created by High Pressure High Temperature (HPHT) growth process.
 Type II