



ELECTRONIC COPY

Report verification at igi.org

DIAMOND REPORT

September 8, 2025
 IGI Report Number
 Description **NATURAL DIAMOND**
 Shape and Cutting Style **OVAL BRILLIANT**
 Measurements **11.27 X 7.94 X 4.98 MM**

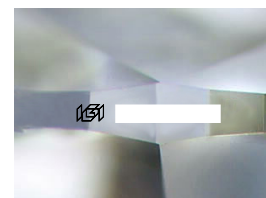
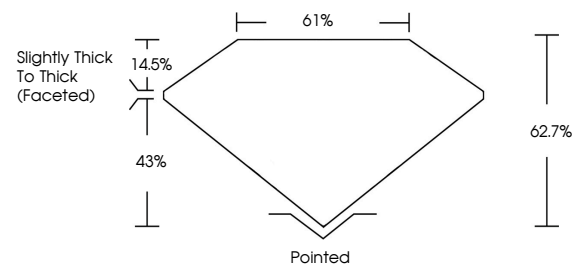
GRADING RESULTS

Carat Weight **3.01 CARATS**
 Color Grade **I**
 Clarity Grade **VS 1**
 Cut Grade **VERY GOOD**

ADDITIONAL GRADING INFORMATION

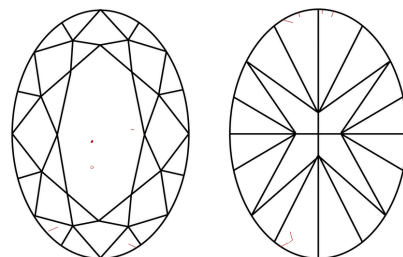
Polish **EXCELLENT**
 Symmetry **EXCELLENT**
 Fluorescence **NONE**
 Inscription(s)

PROPORTIONS



Sample Image Used

CLARITY CHARACTERISTICS



KEY TO SYMBOLS

Red symbols indicate internal characteristics.
 Green symbols indicate external characteristics.

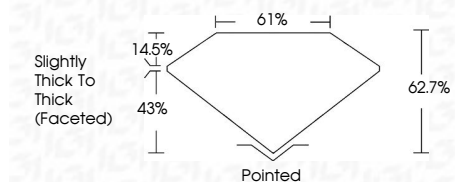
COLOR

D - F	G - J	K - M	N - R	S - Z	FANCY
Colorless	Near Colorless	Slightly Tinted	Very Light Color	Light Color	

CLARITY

IF	VVS ¹⁻²	VS ¹⁻²	SI ¹⁻²	I ¹⁻³
Internally Flawless	Very Very Slightly Included	Very Slightly Included	Slightly Included	Included

September 8, 2025
 IGI Report Number
 Description **NATURAL DIAMOND**
 Shape and Cutting Style **OVAL BRILLIANT**
 Measurements **11.27 X 7.94 X 4.98 MM**
GRADING RESULTS
 Carat Weight **3.01 CARATS**
 Color Grade **I**
 Clarity Grade **VS 1**
 Cut Grade **VERY GOOD**



ADDITIONAL GRADING INFORMATION

Polish **EXCELLENT**
 Symmetry **EXCELLENT**
 Fluorescence **NONE**
 Inscription(s)



IGI



September 8, 2025
 IGI Report No
OVAL BRILLIANT
 11.27 X 7.94 X 4.98 MM
 Carat Weight **3.01 CARATS**
 Color Grade **I**
 Clarity Grade **VS 1**
 Cut Grade **VERY GOOD**
 Depth **62.7%**
 Table **61%**
 Girdle **Slightly Thick To Thick (Faceted)**
 Culet **Pointed**
 Polish **EXCELLENT**
 Symmetry **EXCELLENT**
 Fluorescence **NONE**
 Inscription(s)