



LABORATORY GROWN DIAMOND REPORT

September 30, 2025

IGI Report Number

Description

LABORATORY GROWN DIAMOND

Shape and Cutting Style

OVAL BRILLIANT

Measurements

7.91 X 5.45 X 3.45 MM

GRADING RESULTS

Carat Weight

0.95 CARAT

Color Grade

G

Clarity Grade

VVS 2

ADDITIONAL GRADING INFORMATION

Polish

VERY GOOD

Symmetry

VERY GOOD

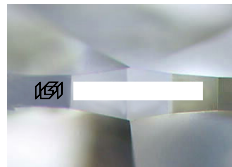
Fluorescence

NONE

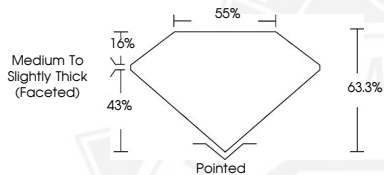
Inscription(s)



Comments: This Laboratory Grown Diamond was created by Chemical Vapor Deposition (CVD) growth process. Type IIa



Sample Image Used



September 30, 2025

IGI Report Number

OVAL BRILLIANT

LABORATORY GROWN DIAMOND

7.91 X 5.45 X 3.45 MM

Carat Weight

0.95 CARAT

Color Grade

G

Clarity Grade

VVS 2

Polish

VERY GOOD

Symmetry

VERY GOOD

Fluorescence

NONE

Inscription(s)



Comments: This Laboratory Grown Diamond was created by Chemical Vapor Deposition (CVD) growth process. Type IIa

September 30, 2025

IGI Report Number

OVAL BRILLIANT

LABORATORY GROWN DIAMOND

7.91 X 5.45 X 3.45 MM

Carat Weight

0.95 CARAT

Color Grade

G

Clarity Grade

VVS 2

Polish

VERY GOOD

Symmetry

VERY GOOD

Fluorescence

NONE

Inscription(s)



Comments: This Laboratory Grown Diamond was created by Chemical Vapor Deposition (CVD) growth process. Type IIa



THIS DOCUMENT WAS PRODUCED WITH THE FOLLOWING SECURITY MEASURES: SPECIAL DOCUMENT PAPER, INK SCREENS, WATERMARK, BACKGROUND DESIGNS, HOLOGRAM AND OTHER SECURITY FEATURES NOT LISTED AND DO EXCEED DOCUMENT SECURITY INDUSTRY GUIDELINES.