



LABORATORY GROWN DIAMOND REPORT

January 9, 2026

IGI Report Number

Description

LABORATORY GROWN DIAMOND

Shape and Cutting Style

OVAL MODIFIED BRILLIANT

Measurements

6.18 X 4.23 X 2.81 MM

GRADING RESULTS

Carat Weight

0.58 CARAT

Color Grade

FANCY INTENSE BLUE

Clarity Grade

VVS 2

ADDITIONAL GRADING INFORMATION

Polish

VERY GOOD

Symmetry

VERY GOOD

Fluorescence

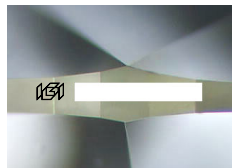
NONE

Inscription(s)

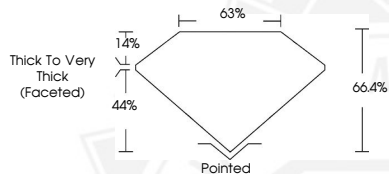


Comments: This Laboratory Grown Diamond was created by High Pressure High Temperature (HPHT) growth process.

Indications of post-growth treatment.



Sample Image Used



January 9, 2026

IGI Report Number

OVAL MODIFIED BRILLIANT

LABORATORY GROWN DIAMOND

6.18 X 4.23 X 2.81 MM

Carat Weight

0.58 CARAT

Color Grade

FANCY INTENSE

BLUE

Clarity Grade

VVS 2

Polish

VERY GOOD

Symmetry

VERY GOOD

Fluorescence

NONE

Inscription(s)



Comments: This Laboratory Grown Diamond was created by High Pressure High Temperature (HPHT) growth process. Indications of post-growth treatment.

January 9, 2026

IGI Report Number

OVAL MODIFIED BRILLIANT

LABORATORY GROWN DIAMOND

6.18 X 4.23 X 2.81 MM

Carat Weight

0.58 CARAT

Color Grade

FANCY INTENSE

BLUE

Clarity Grade

VVS 2

Polish

VERY GOOD

Symmetry

VERY GOOD

Fluorescence

NONE

Inscription(s)



Comments: This Laboratory Grown Diamond was created by High Pressure High Temperature (HPHT) growth process. Indications of post-growth treatment.



THIS DOCUMENT WAS PRODUCED WITH THE FOLLOWING SECURITY MEASURES: SPECIAL DOCUMENT PAPER, INK SCREENS, WATERMARK, BACKGROUND DESIGNS, HOLOGRAM AND OTHER SECURITY FEATURES NOT LISTED AND DO EXCEED DOCUMENT SECURITY INDUSTRY GUIDELINES.