



ELECTRONIC COPY

LABORATORY GROWN DIAMOND REPORT

April 1, 2024
IGI Report Number
Description LABORATORY GROWN DIAMOND
Shape and Cutting Style PEAR BRILLIANT
Measurements 9.68 X 6.40 X 4.11 MM

GRADING RESULTS

Carat Weight 1.52 CARAT
Color Grade H
Clarity Grade VS 1

ADDITIONAL GRADING INFORMATION

Polish EXCELLENT
Symmetry VERY GOOD
Fluorescence NONE

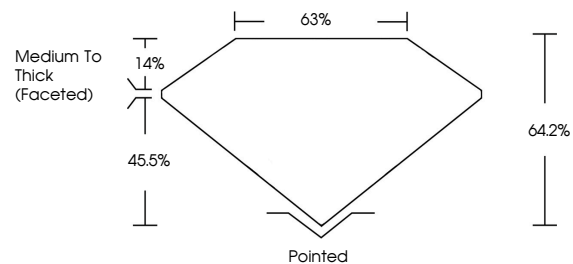
Inscription(s) IGI

Comments: This Laboratory Grown Diamond was created by Chemical Vapor Deposition (CVD) growth process and may include post-growth treatment. Type IIa

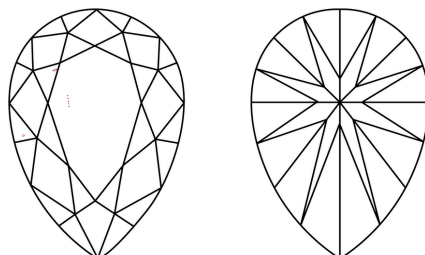
LABORATORY GROWN DIAMOND REPORT

Report verification at igi.org

PROPORTIONS



CLARITY CHARACTERISTICS



KEY TO SYMBOLS

Red symbols indicate internal characteristics.
Green symbols indicate external characteristics.

LABORATORY GROWN DIAMOND REPORT

GRADING SCALES

CLARITY

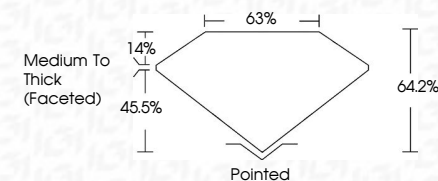
Table mapping clarity grades (IF, VVS 1-2, VS 1-2, SI 1-2, I 1-3) to their descriptions (Internally Flawless, Very Very Slightly Included, Very Slightly Included, Slightly Included, Included).

COLOR

Table mapping color grades (D, E, F, G, H, I, J, Faint, Very Light, Light) to their descriptions.

LABORATORY GROWN DIAMOND REPORT

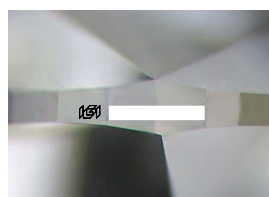
April 1, 2024
IGI Report Number
Description LABORATORY GROWN DIAMOND
Shape and Cutting Style PEAR BRILLIANT
Measurements 9.68 X 6.40 X 4.11 MM
GRADING RESULTS
Carat Weight 1.52 CARAT
Color Grade H
Clarity Grade VS 1



ADDITIONAL GRADING INFORMATION

Polish EXCELLENT
Symmetry VERY GOOD
Fluorescence NONE
Inscription(s) IGI

Comments: This Laboratory Grown Diamond was created by Chemical Vapor Deposition (CVD) growth process and may include post-growth treatment. Type IIa



Sample Image Used



April 1, 2024
IGI Report No PEAR BRILLIANT
9.68 X 6.40 X 4.11 MM
1.52 CARAT H
Color Grade VS 1
Depth 64.2%
Table 63%
Girdle Medium To Thick (Faceted)
Culet Pointed
Polish EXCELLENT
Symmetry VERY GOOD
Fluorescence NONE
Inscription(s) IGI

Comments: This Laboratory Grown Diamond was created by Chemical Vapor Deposition (CVD) growth process and may include post-growth treatment. Type IIa

