



ELECTRONIC COPY

Report verification at igi.org

LABORATORY GROWN DIAMOND REPORT

August 29, 2025  
 IGI Report Number  
 Description **LABORATORY GROWN DIAMOND**  
 Shape and Cutting Style **OVAL MODIFIED BRILLIANT**  
 Measurements **8.98 X 5.94 X 3.78 MM**  
**GRADING RESULTS**  
 Carat Weight **1.50 CARAT**  
 Color Grade **FANCY VIVID BLUE**  
 Clarity Grade **VS 1**

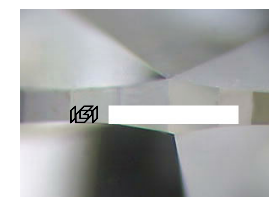
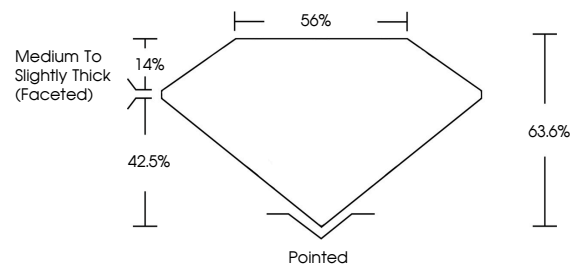
ADDITIONAL GRADING INFORMATION

Polish **EXCELLENT**  
 Symmetry **VERY GOOD**  
 Fluorescence **NONE**

Inscription(s)

Comments: This Laboratory Grown Diamond was created by Chemical Vapor Deposition (CVD) growth process.  
 Indications of post-growth treatment.

PROPORTIONS



Sample Image Used

COLOR

D	E	F	G	H	I	J	Faint	Very Light	Light
---	---	---	---	---	---	---	-------	------------	-------

CLARITY

IF	VS <sup>1-2</sup>	VS <sup>1-2</sup>	SI <sup>1-2</sup>	I <sup>1-3</sup>
Internally Flawless	Very Very Slightly Included	Very Slightly Included	Slightly Included	Included

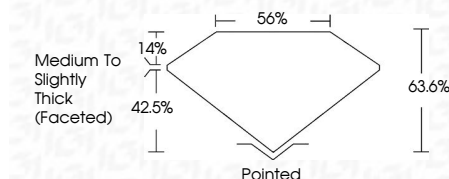
August 29, 2025  
 IGI Report Number  
 Description **LABORATORY GROWN DIAMOND**  
 Shape and Cutting Style **OVAL MODIFIED BRILLIANT**  
 Measurements **8.98 X 5.94 X 3.78 MM**  
**GRADING RESULTS**  
 Carat Weight **1.50 CARAT**  
 Color Grade **FANCY VIVID BLUE**  
 Clarity Grade **VS 1**

ADDITIONAL GRADING INFORMATION

Polish **EXCELLENT**  
 Symmetry **VERY GOOD**  
 Fluorescence **NONE**

Inscription(s)

Comments: This Laboratory Grown Diamond was created by Chemical Vapor Deposition (CVD) growth process.  
 Indications of post-growth treatment.



August 29, 2025  
 IGI Report No  
**OVAL MODIFIED BRILLIANT**  
 8.98 X 5.94 X 3.78 MM  
 Carat Weight **1.50 CARAT**  
 Color Grade **FANCY VIVID BLUE**  
 Clarity Grade **VS 1**  
 Table **56%**  
 Girdle **Medium to Slightly Thick (Faceted)**  
 Culet **Pointed**  
 Polish **EXCELLENT**  
 Symmetry **VERY GOOD**  
 Fluorescence **NONE**  
 Inscription(s)

Comments: This Laboratory Grown Diamond was created by Chemical Vapor Deposition (CVD) growth process.  
 Indications of post-growth treatment.