



**ELECTRONIC COPY**


Report verification at [igi.org](http://igi.org)

**LABORATORY GROWN DIAMOND REPORT**

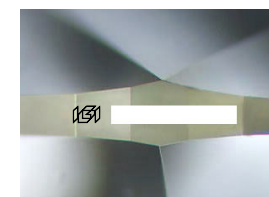
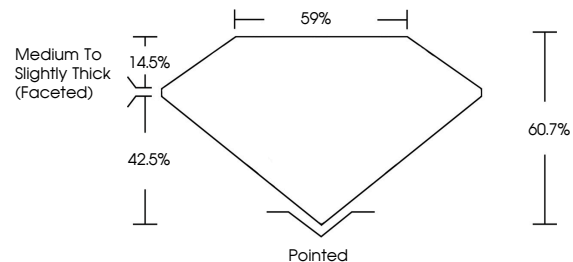
December 16, 2025  
 IGI Report Number  
 Description **LABORATORY GROWN DIAMOND**  
 Shape and Cutting Style **OVAL BRILLIANT**  
 Measurements **10.90 X 7.76 X 4.71 MM**  
**GRADING RESULTS**  
 Carat Weight **2.53 CARATS**  
 Color Grade **D**  
 Clarity Grade **VVS 1**

**ADDITIONAL GRADING INFORMATION**

Polish **EXCELLENT**  
 Symmetry **EXCELLENT**  
 Fluorescence **NONE**

Inscription(s)   
 Comments: As Grown - No indication of post-growth treatment.  
 This Laboratory Grown Diamond was created by High Pressure High Temperature (HPHT) growth process. Type II

**PROPORTIONS**



Sample Image Used

**COLOR**

D E F G H I J Faint Very Light Light


**CLARITY**

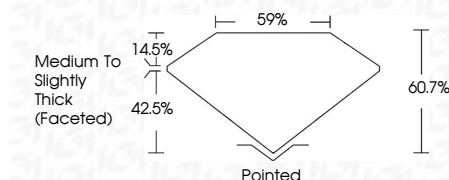
FL	IF	VVS <sup>1-2</sup>	VS <sup>1-2</sup>	SI <sup>1-2</sup>	I <sup>1-3</sup>
Flawless	Internally Flawless	Very Very Slightly Included	Very Slightly Included	Slightly Included	Included


December 16, 2025  
 IGI Report Number  
 Description **LABORATORY GROWN DIAMOND**  
 Shape and Cutting Style **OVAL BRILLIANT**  
 Measurements **10.90 X 7.76 X 4.71 MM**  
**GRADING RESULTS**  
 Carat Weight **2.53 CARATS**  
 Color Grade **D**  
 Clarity Grade **VVS 1**

**ADDITIONAL GRADING INFORMATION**

Polish **EXCELLENT**  
 Symmetry **EXCELLENT**  
 Fluorescence **NONE**

Inscription(s)   
 Comments: As Grown - No indication of post-growth treatment.  
 This Laboratory Grown Diamond was created by High Pressure High Temperature (HPHT) growth process. Type II



December 16, 2025	IGI Report No	<b>OVAL BRILLIANT</b>
10.90 X 7.76 X 4.71 MM	Carat Weight	<b>2.53 CARATS</b>
	Color Grade	<b>D</b>
	Clarity Grade	<b>VVS 1</b>
	Table	<b>60.7%</b>
	Depth	<b>60.7%</b>
	Girdle	<b>Medium to Slightly Thick (Faceted)</b>
	Culet	<b>Pointed</b>
	Polish	<b>EXCELLENT</b>
	Symmetry	<b>EXCELLENT</b>
	Fluorescence	<b>NONE</b>
	Inscription(s)	

Comments: As Grown - No indication of post-growth treatment.  
 This Laboratory Grown Diamond was created by High Pressure High Temperature (HPHT) growth process. Type II